

electrical documentation



type	rated voltage	frequency	rated power	rated current
C4e 20.10 ES	440V 3PH	60Hz	32,6kW	
C4e 20.10 ES	480V 3PH	60Hz	38,6kW	

Welbilt Deutschland GmbH

Talstraße 35
D-82436 Eglfing / Germany

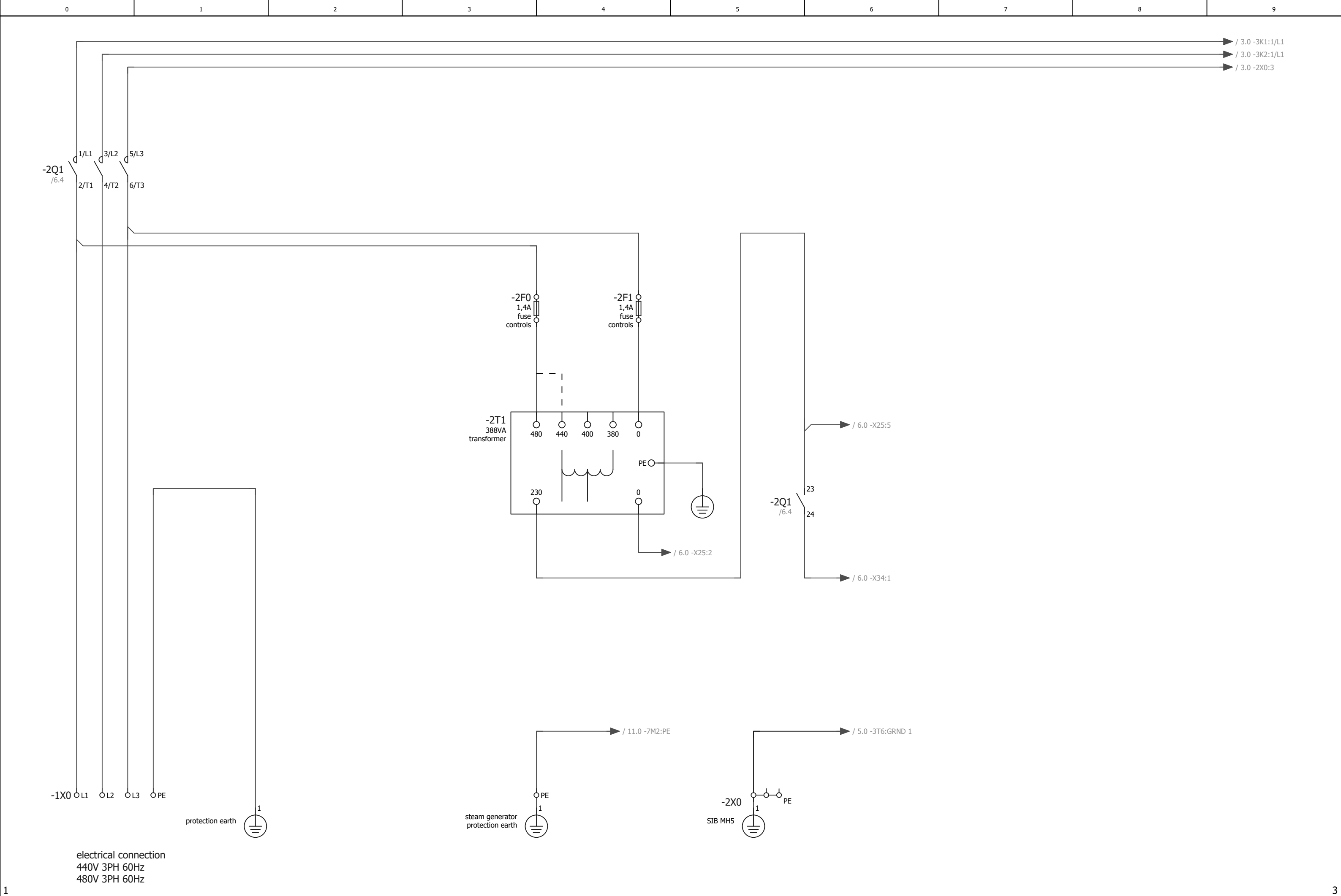
+49 (0)8847 - 67 - 0

+49 (0)8847 - 67 - 414

www.convotherm.com

fuses on site!
Please look at local supply regulations!

2



04	ÄM217/2015	22.12.2015	SchM	Drawn	4/28/2022	C4e 20.10 ES C4e 20.10 ES	Welbilt Deutschland GmbH Talstraße 35 D-82436 Eglfing / Germany @2014	convection	Project No. 5354138		= SLP	
03	ÄM145/2015	10.09.2015	SchM	Name	Boe				+ MPL			
02	ÄM071/2015	22.04.2015	SchM	App.	SchM				Drg. No. 5153082		Blatt	3
REV	Remarks	Date	Name	Norm							Seite	3 / 12

